

PaintShop Pro Tutorials

By Maureen Eves-Lavis

Cloning with PaintShop Pro X3
(earlier versions of PSP may be used)

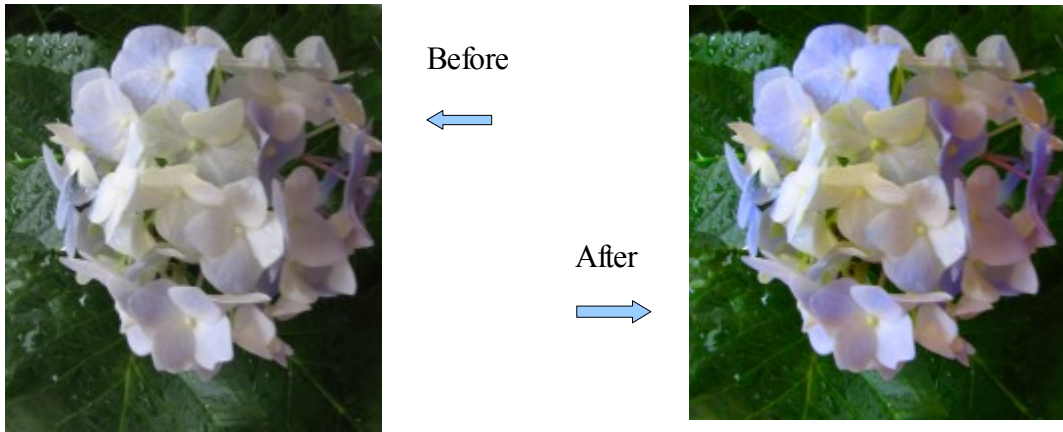
Level: Beginner

Materials: Photograph



[Download Image Here](#)

Open the image provided in your workspace. Duplicate and delete the original (background). Go to Adjust on the Menu bar, open Hue and Saturation, and select Vibrancy. Move the slider along to the the right. I gave it 100% as I wanted my image to be of good colours.



Save this file as a .jpg, but keep the image open in your workspace.

Open a blank, white canvas 800x800 and convert to raster by right clicking and selecting promote background layer.

Add a new raster layer.

Have the canvas and the flower image in the workspace side by side.. Select the paintbrush, normal round brush tip and increase the size to 20. All other settings leave as is.

Hold the paintbrush, and at the same time, hold down the ctrl key, this will produce the dropper tool for you to select colours from the image. As soon as you release the ctrl key, the tool will resume to the brush. Paint strokes diagonally across the canvas. Try and pick up as many colours, light and dark as possible.

Select the Smudge brush with a size of 80,





When smudging is complete, add a little more vibrancy. You should have something like this on the left.

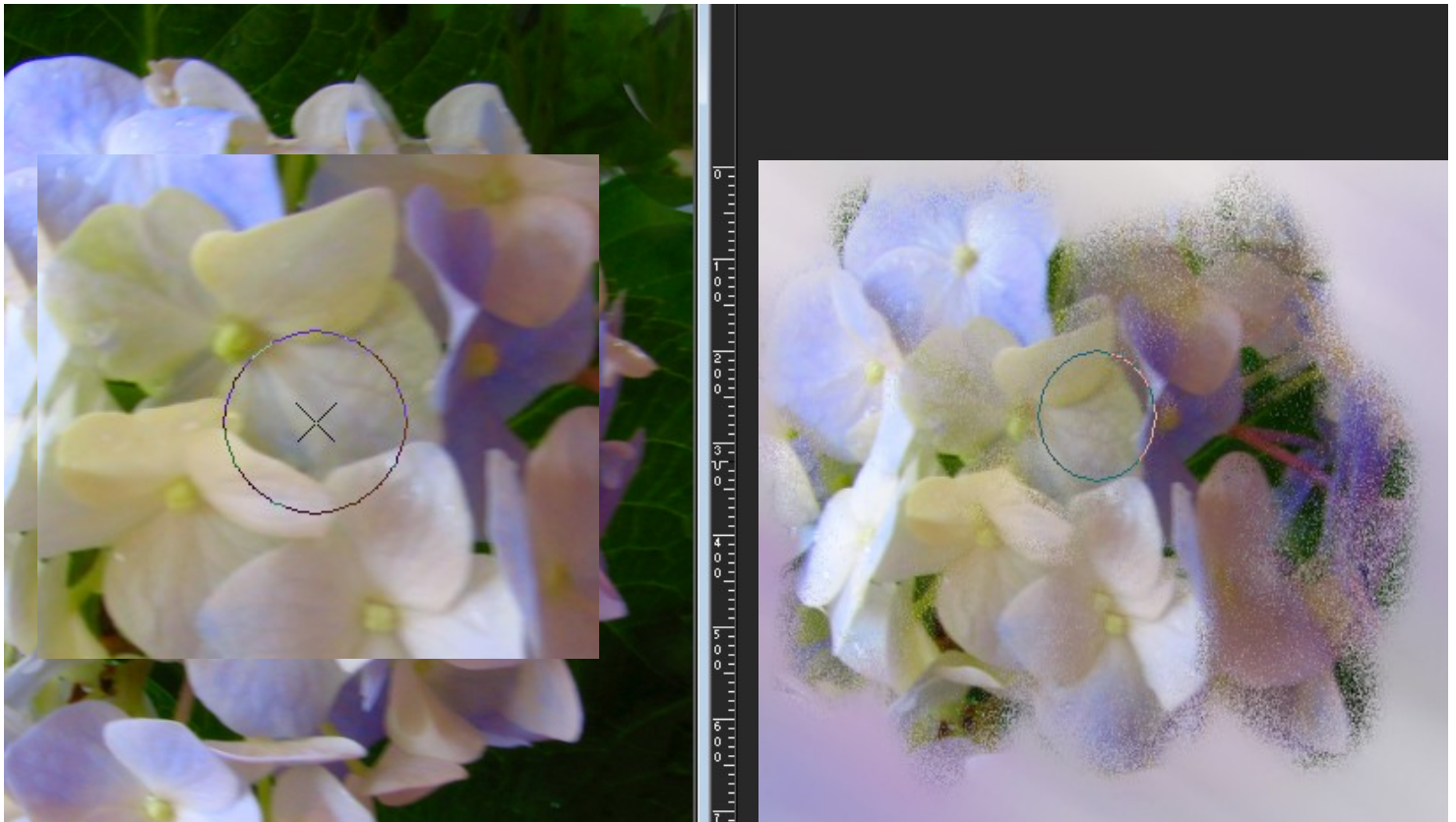
With the Soften brush, gently brush over the entire canvas.

Save as a .PspImage.

Merge visible and make a new layer.

Select the clone tool with a size of 80. Hardness, 48, step 32, density 26 and opacity 100.

To clone from an image you must right click on the centre of the photo then move over to the raster layer and begin painting. Do not lift the brush off the canvas, if you do you will have to undo and start over.



As you are painting watch the brush on the photograph and follow around the petals. Don't add much of the greenery otherwise it will overpower the softness of the flower. Don't press hard as you need nice, soft light strokes.

The clonebrush settings will produce a soft, pastel effect.



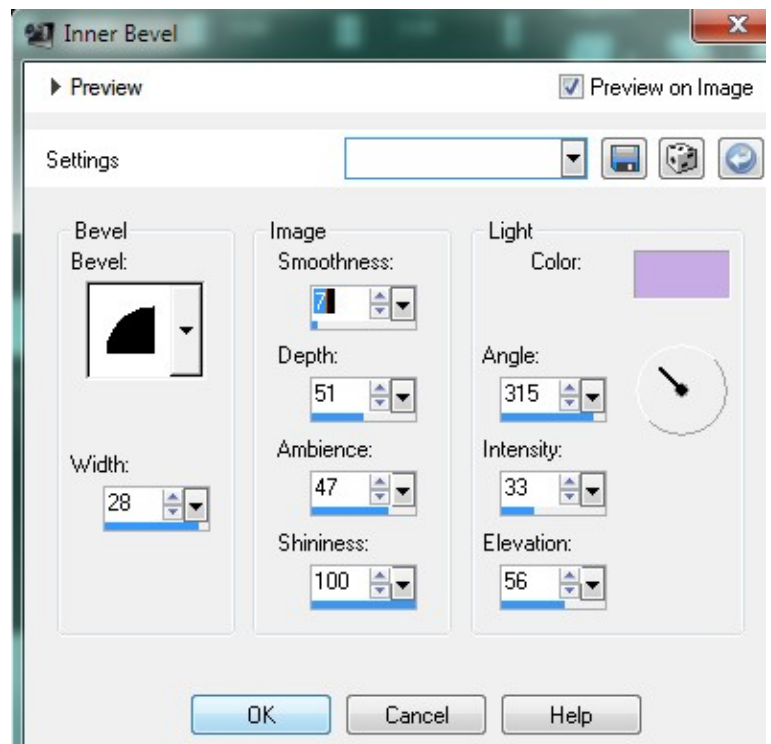
Add a new layer.

Draw an ellipse preset. Foreground colour #533673, background colour null, width 11, anti-alias ticked.

Go to effects, 3d effects, inner bevel and use the settings given here.

This will produce a shiny ellipse over the flowers.

With the eraser, size 50, ellipse layer highlighted, brush away a little of the ellipse so the flowers drape over the top.

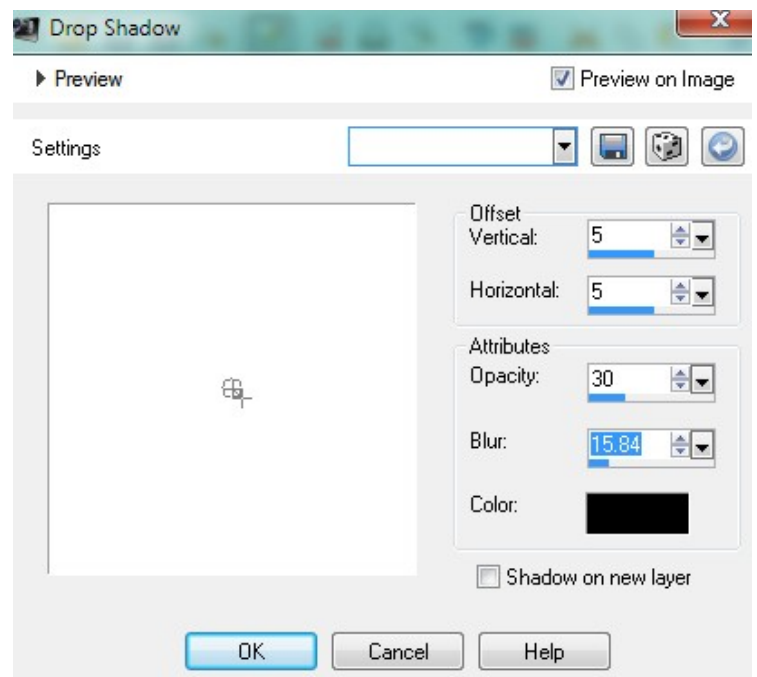




Next, add a shadow to the ellipse. 5 and then another shadow -5.

Select raster 1 and add a texture from Effects, Texture Effects and choose on you like, but do not apply heavily.

Merge All.



Go to image on the menu bar, add borders, and add a white border of 10 all round.

With the magic wand, select the border with a tolerance of 1. Add effects, inner bevel and use the same settings as above. That's it. Your clone painting is complete.

Merge All and add your signature or custom watermark.