

PaintShop Pro Tutorials

By Maureen Eves-Lavis

Reflections

PaintShop Pro X2 / X3

Level: Beginner

Materials: Tubes or Clipart Images



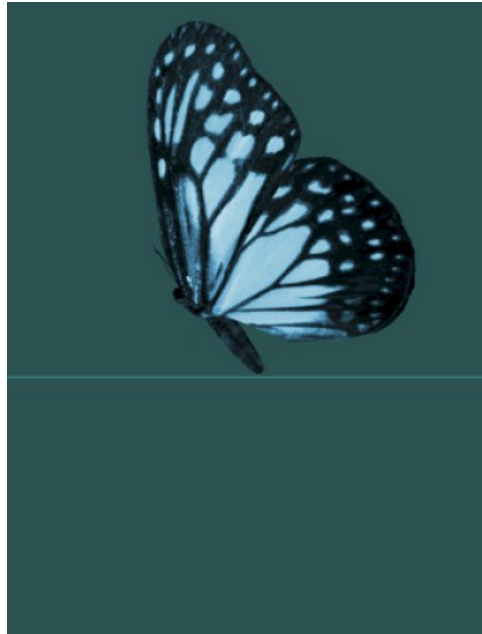
Open a canvas approximately 450 x 650 and flood fill with a solid colour or gradient of your choice that will complement the image that is being created.

Select the pen tool and with the straight line, draw a line across the background. This creates a vector layer that enables the line to be faded by using the opacity slider on the layer palette. To complete, click the green button with the tick on it up on the standard tool bar.

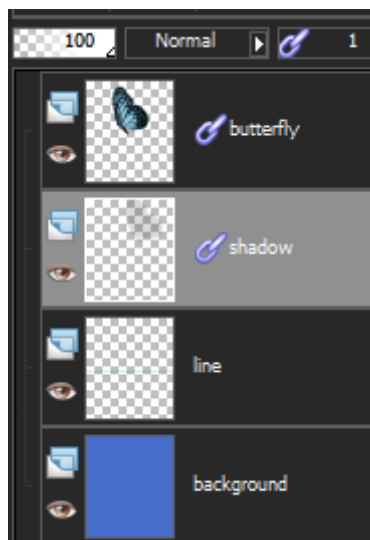
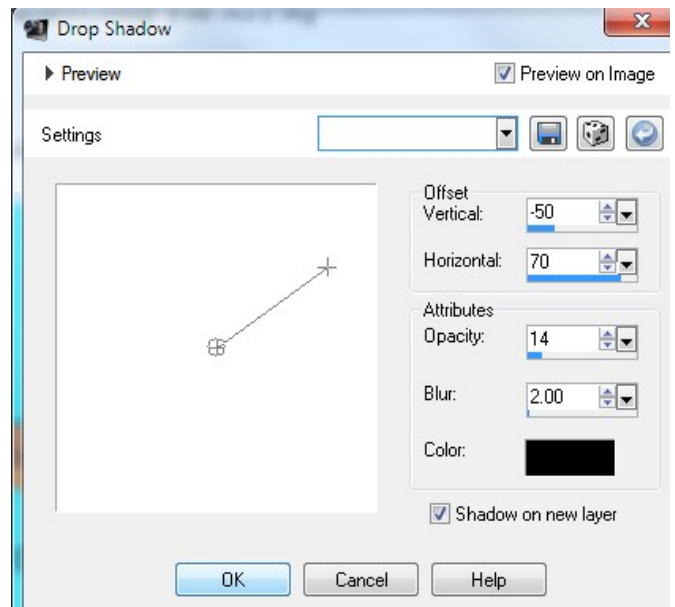
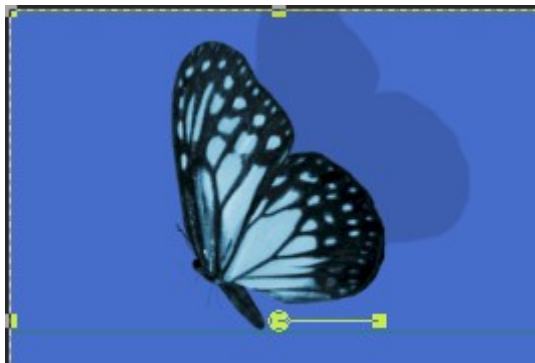
From the example image above and below I used a solid colour on each image.

Select an image, clipart or tube of your liking and place it in the top portion of the canvas, resizing if necessary. If opening an image, it will have to be copied and pasted as a new layer. Remember to remove any background from the image with the selection tool first.

Effects, colourising, lightening or darkening can be applied to the image. My butterfly I colourised making it blue.



I didn't much like the dark background so changed it to blue. I then added a shadow. Tick the box to place the shadow on its own layer.

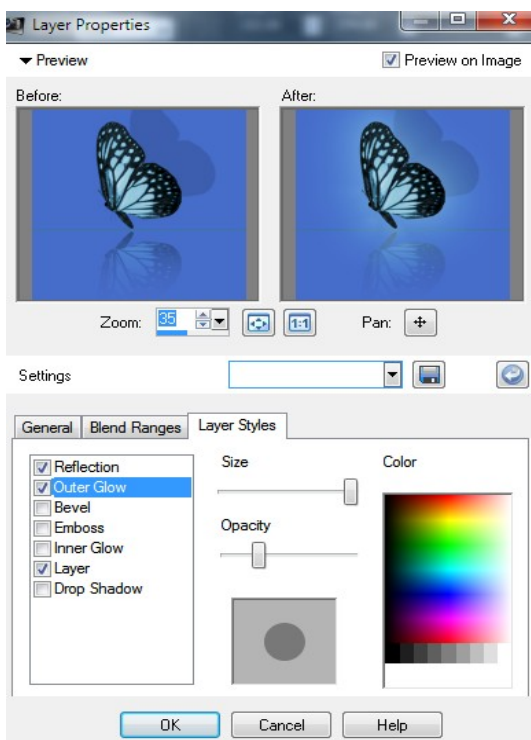
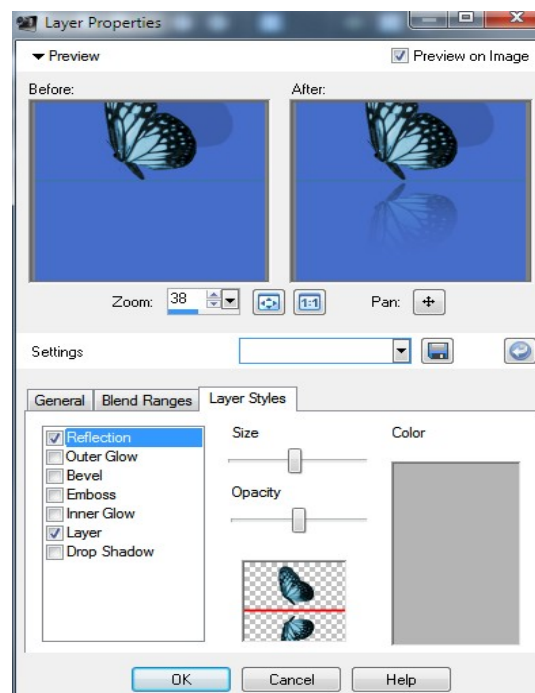
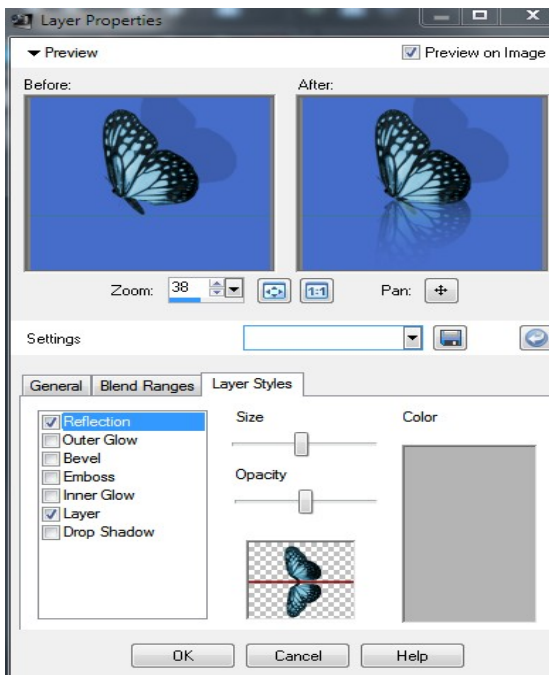


The layer palette should look like this.

Fade the line layer by reducing the opacity at the top of the layer palette so you can just barely see it.

Double click on the image (butterfly) layer which opens the layer properties dialogue window. Place a tick in the preview on image at the top right and place the window so you can see the effect in real in PSP.

There are three tabs, choose layer styles. Zoom at about 38, so you have a full view in the before and after panes. On the left side there is a list with tick boxes beside, choose Reflection. In the small transparent background pane at the bottom, there's a red line, grab, hold and move that line until the reflection is placed correctly. When satisfied, click OK.



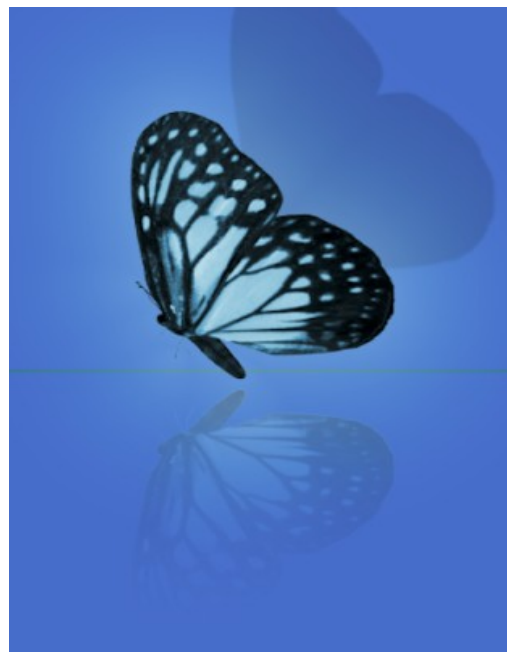
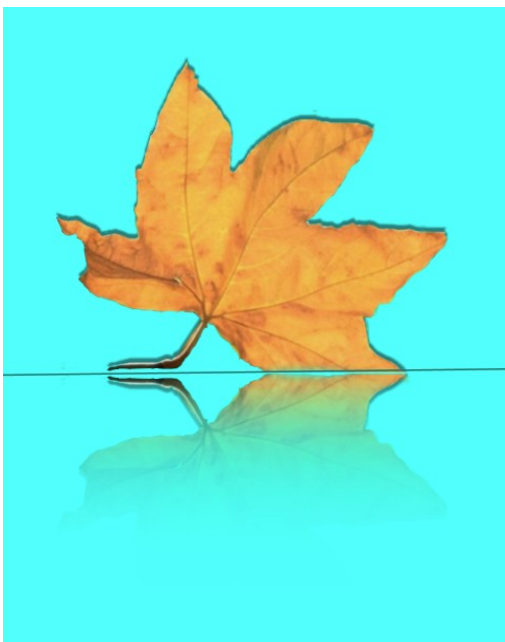
I decided to give the butterfly a little glow, if you wish to do this, go back to the layer properties and tick the outer glow box with these settings as shown on the left.

Before merging you may want to remove the vector line, or just click the eye to hide the layer.

If you are happy with your image, you can click right click on the layer in the layer palette and merge visible.

You may want to add a texture to the background or colourise the image before merging. Now is the time to do it. You can also save the image at this point as a PSP.Image so you can retain all the various layers.

Merge visible I cropped my image closer to the butterfly and or the leaf as you can see below. If the image is too small, go to image, resize to around 500 or 600 on the largest side.



If you wish to add text below the image. After merging, make a new vector layer. Type your text.

Double click on the layer and add the reflection in the same way as for the image.

Reflection will only work on Vector and Raster layers.

How about adding a nice border or frame.

I selected a border of 2 pixels white, then 20 pixels of a lighter blue, 2 pixels of white and 10 pixels of the same blue in the image. Select the magic wand and tap in the lighter colour, open adjust, add/remove noise and add noise. Gaussian blur, monochrome, 40%. Ctrl+D to deselect.

The image can be used for a greeting card, or whatever you desire. Add a pretty text and your watermark and your image is complete.

